

MAYIS AYI YABANCI İŞLEMLERİ - 2025

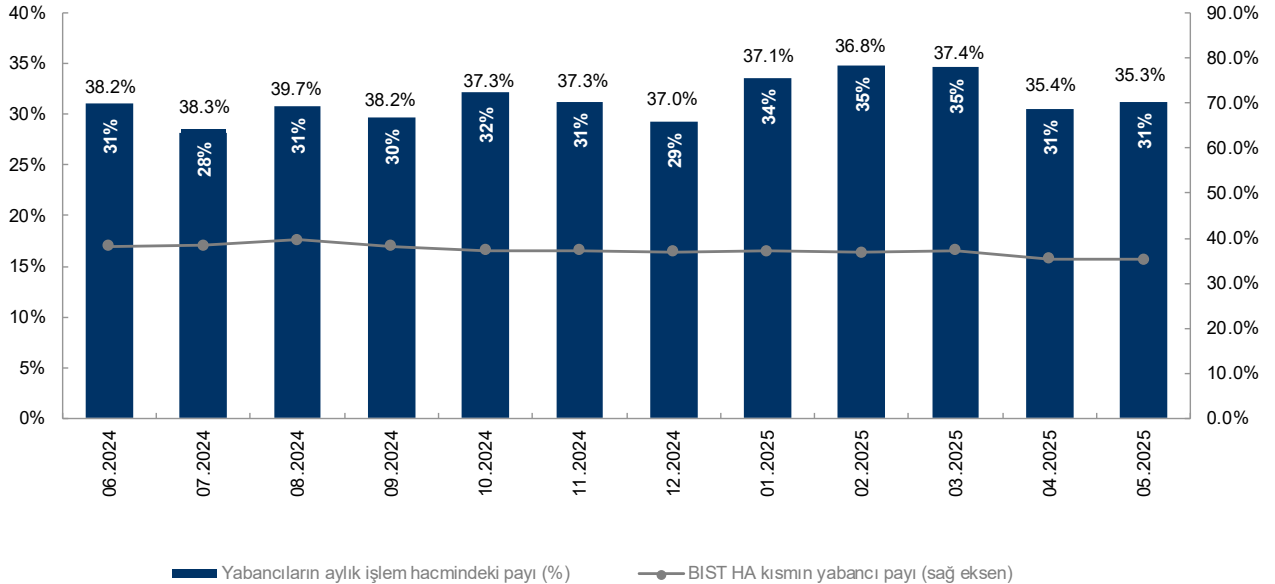
Yabancı yatırımcılar Mayıs ayında **339 milyon dolarlık net alış** gerçekleştirdi. 2025 yılında kümülatif olarak **635 milyon dolarlık net alış** gerçekleştirildi.

En çok alım yapılan hisseler: BIM <BIMAS TI> US\$124mn; Aselsan <ASELS TI> US\$72mn; Turkcell <TCELL TI> US\$56mn; Koç Holding <KCHOL TI> US\$41mn ve Tüpraş <TUPRS TI> US\$38mn.

En çok satış yapılan hisseler: Akbank <AKBNK TI> US\$68mn; Ford Otomotiv <FROTO TI> US\$38mn; Yapı Kredi Bank <YKBNK TI> US\$38mn; Anadolu Efes <AEFES TI> US\$34mn ve Enka İnşaat <ENKAI TI> US\$32mn.

En Fazla Net Alış (\$ mn)	Alış	Satış	Net Alış	En Fazla Net Satış (\$ mn)	Alış	Satış	Net Alış
Bim Birleşik Mağazalar	660	536	124	Akbank	1,226	1,294	-68
Aselsan	1,080	1,008	72	Ford Otosan	208	246	-38
Turkcell	436	380	56	Yapı Ve Kredi Bankası	1,219	1,257	-38
Koç Holding	813	772	41	Anadolu Efes Biracılık	187	221	-34
Tüpraş	420	383	38	Enka İnşaat	216	248	-32
Pegasus Hava Taşımacılığı	346	311	36	Türk Hava Yolları	1,106	1,138	-32
İş Bankası (C)	774	745	29	Sasa	195	209	-14
Sabancı Holding	478	452	26	Kardemir (D)	209	223	-13
Koza Altın İşletmeleri	233	209	24	Tav Havalimanları	129	141	-12
Emlak G.M.Y.O.	451	428	23	Oyak Çimento Fabrikaları	98	110	-11

Kaynak: BIST; YKY Araştırma; Rasyonet



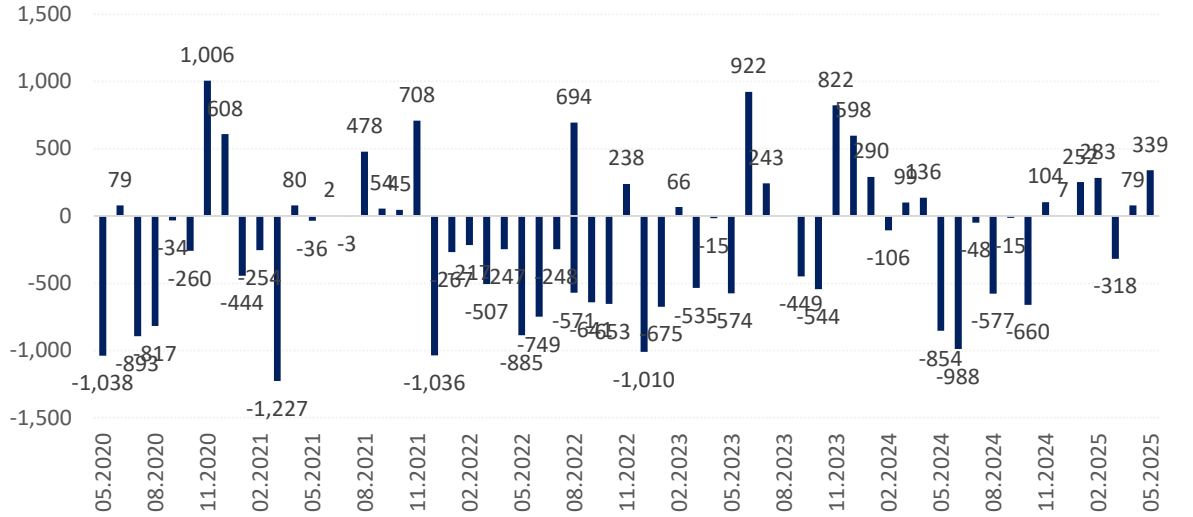
Kaynak: BIST, MKK, YKY Araştırma

YABANCI İŞLEMLERİNİN AYLARA GÖRE SEYRİ

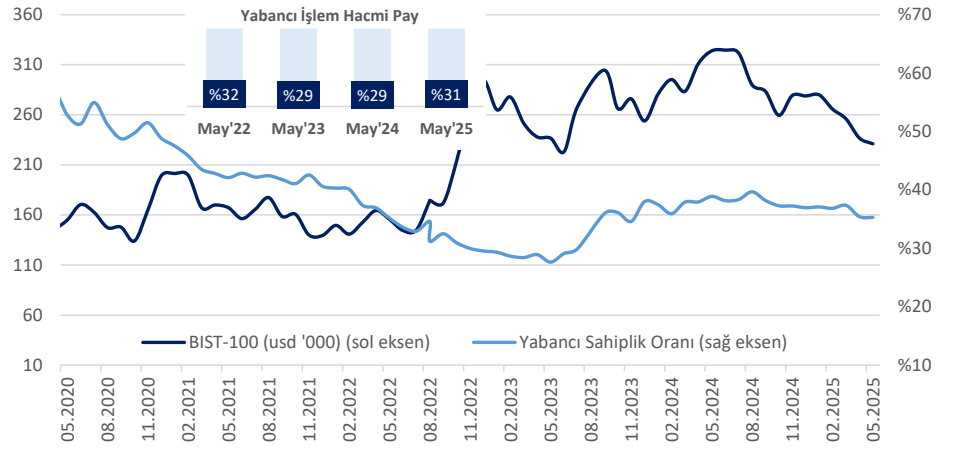
(\$ milyon)	NET	BIST	YABANCI İŞLEM		(\$ milyon)	NET	BIST	YABANCI İŞLEM	
	Alış	İşl. Hacmi	Hacmi	Payı		Alış	İşl. Hacmi	Hacmi	Payı
Şub.24	-106	136,334	70,927	%26	Eki.24	-660	63,098	40,655	%32
Mar.24	99	103,537	59,521	%29	Kas.24	104	74,648	46,699	%31
Nis.24	136	80,927	47,816	%30	Ara.24	7	75,269	44,102	%29
May.24	-854	112,095	65,470	%29	Oca.25	252	81,455	54,724	%34
Haz.24	-988	68,090	42,312	%31	Şub.25	283	71,793	50,016	%35
Tem.24	-48	91,728	51,556	%28	Mar.25	-318	100,907	69,906	%35
Ağu.24	-577	77,569	47,722	%31	Nis.25	79	74,078	46,871	%32
Eyl.24	-15	70,908	42,035	%30	May.25	339	72,488	45,305	%31

Kaynak: BIST, YKY Araştırma, Rasyonet

Yabancı Aylık Net Alım İşlemleri (USD milyon)

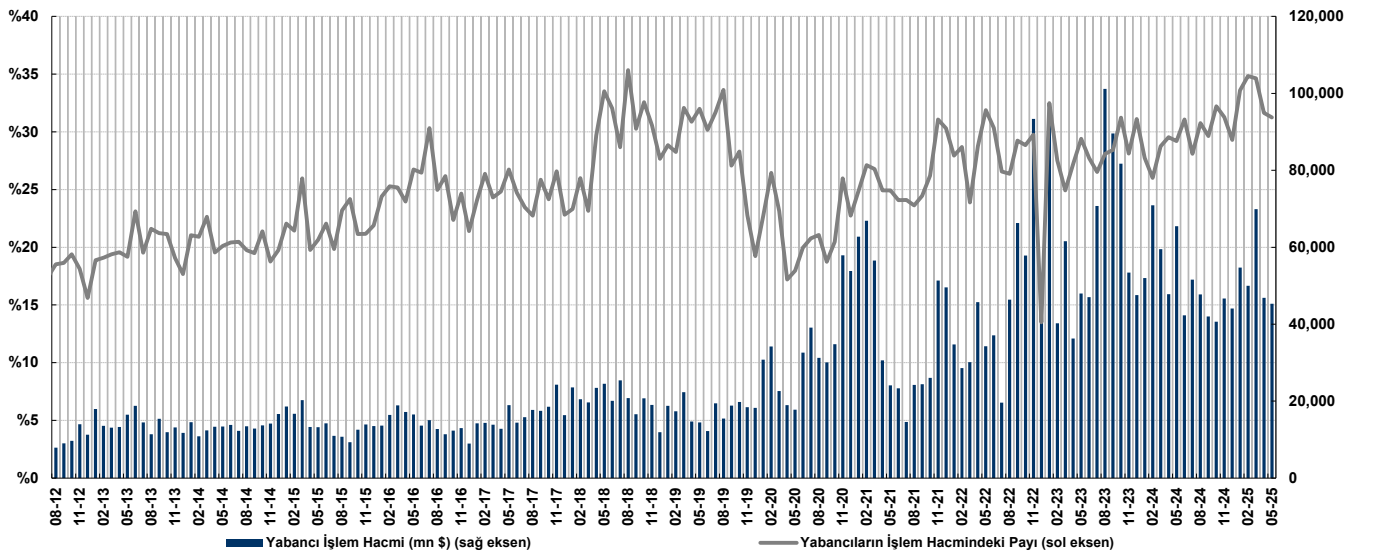
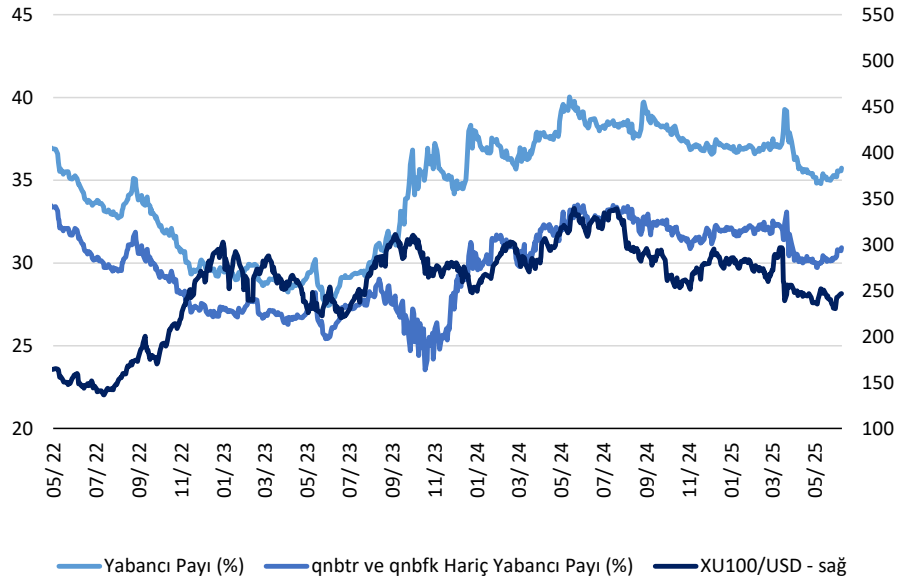


Yabancı Sahiplik Oranı vs. BIST 100 (USD '000)



(*): QNB payları dahil. Bu paylar hariç bakıldığında yabancı sahiplik oranının %30.31 seviyelerinde olduğunu 30/052025 tarihi itibarıyla tahmin ediyoruz.

Yabancı Payı (*) ve BIST100/USD



EN FAZLA NET ALIŞ (US\$mn)

		Mayıs - 2025		
		Alış	Satış	Net Alış
1	BİM BİRLEŞİK MAĞAZALAR A.Ş.	660.2	536.1	124.0
2	ASELSAN ELEKTRONİK SANAYİ VE TİCARET A.Ş.	1,079.7	1,007.6	72.0
3	TURKCELL İLETİŞİM HİZMETLERİ A.Ş.	435.9	380.0	56.0
4	KOÇ HOLDİNG A.Ş.	813.2	771.9	41.0
5	TÜPRAŞ TÜRKİYE PETROL RAFİNERİLERİ A.Ş.	420.4	382.9	38.0
6	PEGASUS HAVA TAŞIMACILIĞI A.Ş.	346.2	310.6	36.0
7	TÜRKİYE İŞ BANKASI A.Ş. C GRUBU	773.7	745.1	29.0
8	HACI ÖMER SABANCI HOLDİNG A.Ş.	478.1	451.7	26.0
9	KOZA ALTIN İŞLETMELERİ A.Ş.	232.9	208.8	24.0
10	EMLAK KONUT GAYRİMENKUL YATIRIM ORTAKLIĞI	451.1	428.0	23.0
11	DESTEK FINANS FAKTORING A.Ş.	121.7	103.0	19.0
12	TOFAŞ TÜRK OTOMOBİL FABRİKASI A.Ş.	300.8	283.5	17.0
13	AHLATCI DOĞAL GAZ DAĞITIM ENERJİ VE YATIRIM	39.1	24.2	15.0
14	BALSU GIDA SANAYİ VE TİCARET A.Ş.	66.7	52.2	15.0
15	MİGROS TİCARET A.Ş.	192.2	179.9	12.0
16	DOĞUŞ OTOMOTİV SERVİS VE TİCARET A.Ş.	110.6	99.1	12.0
17	PASİFİK EURASIA LOJİSTİK DİŞ TİCARET A.Ş.	78.3	68.9	9.0
18	RAL YATIRIM HOLDİNG A.Ş.	60.7	52.6	8.0
19	ÜLKER BİSKÜVİ SANAYİ A.Ş.	131.3	123.9	7.0
20	ALBARAKA TÜRK KATILIM BANKASI A.Ş.	28.5	21.1	7.0
BIST TOPLAM		22,822.3	22,483.1	339

Kaynak: BIST, YKY Araştırma

EN FAZLA NET SATIŞ (US\$mn)

		Mayıs - 2025		
		Alış	Satış	Net Alış
1	AKBANK T.A.Ş.	1,226.1	1,294.5	-68.0
2	FORD OTOMOTİV SANAYİ A.Ş.	208.4	246.1	-38.0
3	YAPI VE KREDİ BANKASI A.Ş.	1,219.2	1,256.8	-38.0
4	ANADOLU EFES BİRACILIK VE MALT SANAYİİ A.Ş.	187.4	221.0	-34.0
5	ENKA İNŞAAT VE SANAYİİ A.Ş.	215.7	248.0	-32.0
6	TÜRK HAVA YOLLARI A.O	1,106.0	1,137.8	-32.0
7	SASA POLYESTER SANAYİ A.Ş.	194.5	208.9	-14.0
8	KARDEMİR KARABÜK DEMİR ÇELİK SANAYİ VE TİCARET A.Ş.	209.3	222.6	-13.0
9	TAV HAVALİMANLARI HOLDİNG A.Ş.	129.1	141.2	-12.0
10	OYAK ÇİMENTO FABRİKALARI A.Ş.	98.3	109.7	-11.0
11	OBA MAKARNACILIK SANAYİ VE TİCARET A.Ş.	97.0	108.3	-11.0
12	ÇELEBİ HAVA SERVİSİ A.Ş.	41.8	52.5	-11.0
13	GÜBRE FABRİKALARI T.A.Ş.	202.7	212.0	-9.0
14	KONTROLMATİK TEKNOLOJİ ENERJİ VE MÜHENDİSLİK A.Ş.	78.2	87.3	-9.0
15	BATI EGE GAYRİMENKUL YATIRIM ORTAKLIĞI A.Ş.	58.4	67.4	-9.0
16	GRAINTURK HOLDİNG A.Ş.	40.7	48.4	-8.0
17	KOZA ANADOLU METAL MADENCİLİK İŞLETMELERİ A.Ş.	81.8	87.9	-6.0
18	AKSA AKRİLİK KİMYA SANAYİİ A.Ş.	16.6	22.4	-6.0
19	ANADOLU ANONİM TÜRK SİGORTA ŞİRKETİ	25.9	31.4	-5.0
20	TEKFEN HOLDİNG A.Ş.	140.0	145.1	-5.0
BIST TOPLAM		22,822.3	22,483.1	339

Kaynak: BIST, YKY Araştırma

BIST-30 HİSSELERİNDE YABANCI PAYI

			Değişim (%)				
	Hisse Kodu	Şirket	Mar 2025	Nis 2025	May 2025	Aylık	Sene Başı
1	AEFES	Anadolu Efes Biracılık	%38.59	%38.56	%35.91	-%2.65	-%17.95
2	AKBNK	Akbank	%49.61	%50.22	%46.93	-%3.30	-%4.73
3	ASELS	Aselsan	%39.62	%45.19	%47.20	%2.01	%14.17
4	ASTOR	Astor Enerji	%39.17	%39.84	%41.41	%1.57	%24.74
5	BIMAS	Bim Birleşik Mağazalar	%43.18	%43.99	%46.56	%2.56	-%3.45
6	CIMSA	Çimsa	%9.57	%8.62	%8.57	-%0.05	-%1.26
7	EKGYO	Emlak G.M.Y.O.	%17.03	%16.57	%18.65	%2.07	%0.32
8	ENKAI	Enka İnşaat	%29.40	%30.62	%29.16	-%1.46	-%3.94
9	EREGL	Ereğli Demir Çelik	%17.81	%17.99	%17.52	-%0.47	%0.20
10	FROTO	Ford Otosan	%35.81	%34.85	%32.97	-%1.88	-%1.60
11	GARAN	Garanti Bankası	%9.44	%8.53	%8.78	%0.25	%0.22
12	HEKTS	Hektaş	%9.17	%9.82	%10.28	%0.46	%0.06
13	ISCTR	İş Bankası (C)	%26.55	%26.72	%27.82	%1.10	-%1.60
14	KCHOL	Koç Holding	%46.30	%42.14	%42.14	%0.00	-%9.41
15	KOZAL	Koza Altın İşletmeleri	%18.30	%20.02	%21.53	%1.51	%2.66
16	KRDMD	Kardemir (D)	%16.75	%14.08	%12.29	-%1.79	-%1.42
17	MGROS	Migros	%30.19	%30.30	%31.58	%1.28	%1.35
18	PETKM	Petkim	%8.89	%8.07	%8.79	%0.71	-%1.25
19	PGSUS	Pegasus Hava Taşımacılığı	%33.37	%30.85	%30.98	%0.13	%3.88
20	SAHOL	Sabancı Holding	%38.29	%35.71	%37.09	%1.38	-%4.52
21	SASA	Sasa	%7.31	%16.53	%25.33	%8.80	%16.17
22	SISE	Şişe Cam	%12.05	%11.95	%11.98	%0.04	-%3.60
23	TAVHL	Tav Havalimanları	%67.96	%64.86	%63.17	-%1.70	-%4.52
24	TCELL	Turkcell	%65.48	%66.27	%67.47	%1.20	%4.78
25	THYAO	Türk Hava Yolları	%28.01	%30.50	%27.52	-%2.98	%1.00
26	TOASO	Tofaş Otomobil Fab.	%15.77	%14.60	%16.32	%1.72	-%11.08
27	TTKOM	Türk Telekom	%29.57	%36.84	%37.49	%0.65	%14.54
28	TUPRS	Tüpraş	%24.27	%25.38	%25.82	%0.44	-%2.76
29	ULKER	Ülker	%10.07	%10.20	%10.71	%0.51	-%0.80
30	YKBNK	Yapı Ve Kredi Bankası	%28.54	%27.23	%25.15	-%2.07	-%8.30
BIST-30			%37.35	%35.41	%35.28	-%0.13	-%1.67

Kaynak: BIST, YKY Araştırma

Research Rating and Important Disclosures

1. Important Disclosures

This research report was prepared by Yapi Kredi Yatirim authorized to engage in securities activities in Turkey amongst other jurisdictions. Yapi Kredi Yatirim is not a registered broker-dealer in the United States and, therefore, is not subject to U.S. rules regarding the preparation of research reports and the independence of research analysts. This research report is provided for distribution to “major U.S. institutional investors” in reliance on the exemption from registration provided by Rule 15a-6 of the U.S. Securities Exchange Act of 1934, as amended (the “Exchange Act”).

Any U.S. recipient of this research report wishing to effect any transaction to buy or sell securities or related financial instruments based on the information provided in this research report should do so only through Kepler Capital Markets, Inc. (“KCM”), a registered broker-dealer in the United States located at 600 Lexington Avenue, New York, NY 10022; Compliance Department (212) 710-7625; Trading Desk: 212-710-7602; www.keplercheuvreux.com. Yapi Kredi Yatirim maintains a Rule 15a-6 agreement with KCM. Under no circumstances should any (U.S. based) recipient of this research report effect any transaction to buy or sell securities or related financial instruments through Yapi Kredi Yatirim.

KCM may accept responsibility for the contents of this research report, subject to the terms set out below, to the extent that it is delivered to a U.S. person other than a major U.S. institutional investor.

The analyst whose name appears in this research report is not registered or qualified as a research analyst with the Financial Industry Regulatory Authority (“FINRA”) and may not be an associated person of KCM and, therefore, may not be subject to applicable restrictions under FINRA Rules on communications with a subject company, public appearances and trading securities held by a research analyst account.

A. Analyst Disclosures

The functional job title of the person(s) responsible for the recommendations contained in this report is Equity Research Analyst unless otherwise stated on the cover.

Regulation AC: Analyst Certification: Each Equity Research Analyst(s) listed on the front-page of this report, principally responsible for the preparation and content of all or any identified portion of this research report hereby certifies that, with respect to each issuer or security or any identified portion of the report with respect to an issuer or security that the equity research analyst covers in this research report, all of the views expressed in this research report accurately reflect their personal views about those issuer(s) or securities. Each Equity Research Analyst(s) also certifies that no part of their compensation was, is, or will be, directly or indirectly, related to the specific recommendation(s) or view(s) expressed by that equity research analyst in this research report. Each Equity Research Analyst certifies that he/she is acting independently and impartially from the referenced company/shareholders, directors and is not affected by any current or potential conflict of interest that may arise from any the companies’ activities.

Analyst Compensation: The research analyst(s) primarily responsible for the preparation of the content of the research report attest that no part of the analyst(s) compensation was, is or will be, directly or indirectly, related to the specific recommendations expressed by the research analyst(s) in the research report. The research analyst(s) compensation is, however, determined by the overall economic performance of Yapi Kredi Yatirim.

Registration of non-US Analysts: Unless otherwise noted, the non-US analysts listed on the front of this report are employees of Yapi Kredi Yatirim. Equity Research Analysts employed by Yapi Kredi Yatirim, are not registered/qualified as research analysts under FINRA/NYSE rules, may not be associated persons of a U.S. registered broker-dealer and may not be subject to NASD Rule 2711 and NYSE Rule 472 restrictions on communications with covered companies, public appearances, and trading securities held by a research analyst account.

Please refer to www.yky.com for further information relating to research and conflict of interest management.

2. Additional Disclosures/Disclaimers

A. Additional Disclosures

This product is not for retail clients or private individuals. The information contained in this publication was obtained from various publicly available sources believed to be reliable, but has not been independently verified by Yapi Kredi Yatirim. Yapi Kredi Yatirim does not warrant the completeness or accuracy of such information and does not accept any liability

with respect to the accuracy or completeness of such information, except to the extent required by applicable law. This publication is a brief summary and does not purport to contain all available information on the subjects covered. Further information may be available on request. This report may not be reproduced for further publication unless the source is quoted. This publication is for information purposes only and shall not be construed as an offer or solicitation for the subscription or purchase or sale of any securities, or as an invitation, inducement or intermediation for the sale, subscription or purchase of any securities, or for engaging in any other transaction. This publication is not for private individuals.

Any opinions, projections, forecasts or estimates in this report are those of the author only, who has acted with a high degree of expertise. They reflect only the current views of the author at the date of this report and are subject to change without notice. Yapi Kredi Yatirim has no obligation to update, modify or amend this publication or to otherwise notify a reader or recipient of this publication in the event that any matter, opinion, projection, forecast or estimate contained herein, changes or subsequently becomes inaccurate, or if research on the subject company is withdrawn. The analysis, opinions, projections, forecasts and estimates expressed in this report were in no way affected or influenced by the issuer. The author of this publication benefits financially from the overall success of Yapi Kredi Yatirim.

The investments referred to in this publication may not be suitable for all recipients. Recipients are urged to base their investment decisions upon their own appropriate investigations that they deem necessary. Any loss or other consequence arising from the use of the material contained in this publication shall be the sole and exclusive responsibility of the investor and Yapi Kredi Yatirim accepts no liability for any such loss or consequence. In the event of any doubt about any investment, recipients should contact their own investment, legal and/or tax advisers to seek advice regarding the appropriateness of investing. Some of the investments mentioned in this publication may not be readily liquid investments. Consequently it may be difficult to sell or realize such investments. The past is not necessarily a guide to future performance of an investment. The value of investments and the income derived from them may fall as well as rise and investors may not get back the amount invested. Some investments discussed in this publication may have a high level of volatility. High volatility investments may experience sudden and large falls in their value which may cause losses. International investing includes risks related to political and economic uncertainties of foreign countries, as well as currency risk. To the extent permitted by applicable law, no liability whatsoever is accepted for any direct or consequential loss, damages, costs or prejudices whatsoever arising from the use of this publication or its contents.

Yapi Kredi Yatirim (and its affiliates) has implemented reasonable written procedures designed to identify and manage potential conflicts of interest that arise in connection with its research activities, which are available upon request. The Yapi Kredi Yatirim research analysts and other staff involved in issuing and disseminating research reports operate independently of Yapi Kredi Yatirim Investment Banking business. Information barriers and procedures are in place between the research analysts and staff involved in securities trading for the account of Yapi Kredi Yatirim or clients to ensure that price sensitive information is handled according to applicable laws and regulations.

B. Country and region disclosures

United States: This communication is only intended for, and will only be distributed to, persons residing in any jurisdictions where such distribution or availability would not be contrary to local law or regulation. This communication must not be acted upon or relied on by persons in any jurisdiction other than in accordance with local law or regulation and where such person is an investment professional with the requisite sophistication to understand an investment in such securities of the type communicated and assume the risks associated therewith. This communication is confidential and is intended solely for the addressee. It is not to be forwarded to any other person or copied without the permission of the sender. This communication is provided for information only. It is not a personal recommendation or an offer to sell or a solicitation to buy the securities mentioned. Investors should obtain independent professional advice before making an investment.

Notice to U.S. Investors: This material is not for distribution in the United States, except to "major US institutional investors" as defined in SEC Rule 15a-6 ("Rule 15a-6"). Yapi Kredi Yatirim maintains a Rule 15a-6 "chaperoning arrangement" with Kepler Capital Markets, Inc. ("KCM"), which enables this report to be furnished to certain U.S. recipients in reliance on Rule 15a-6 through US Broker-Dealers registered under the U.S. Securities Exchange Act of 1934, as amended. Each U.S. recipient of this report represents and agrees, by virtue of its acceptance thereof, that it is a "major U.S. institutional investor" (as such term is defined in Rule 15a-6) and that it understands the risks involved in executing transactions in such securities. Any U.S. recipient of this report that wishes to discuss or receive additional information regarding any security or issuer mentioned herein, or engages in any transaction to purchase or sell or solicit or offer the purchase or sale of such securities, should contact a registered representative of the US Broker-Dealer that provided the report. Under no circumstance should you direct orders to Yapi Kredi Yatirim. KCM is a broker-dealer registered with the SEC, a member of FINRA and SIPC. You can reach KCM, at 600 Lexington Avenue, New York, NY

10022, phone (212) 710-7606; Equity trading: 212-710-7602. Further information is also available at www.keplercapitalmarkets.com. You may obtain information about SIPC, including the SIPC brochure, by contacting SIPC directly at 202-371-8300; website: <http://www.sipc.org>.

Nothing herein excludes or restricts any duty or liability to a customer that KCM has under applicable law. Investment products provided by or through KCM are not insured by the Federal Deposit Insurance Corporation and are not deposits or other obligations of any insured depository institution, may lose value and are not guaranteed by the entity that published the research as disclosed on the front page and are not guaranteed by KCM. Investing in non-U.S. Securities may entail certain risks. The securities referred to in this report and non-U.S. issuers may not be registered under the U.S. Securities Act of 1933, as amended, and the issuer of such securities may not be subject to U.S. reporting and/or other requirements. Rule 144A securities may be offered or sold only to persons in the U.S. who are Qualified Institutional Buyers within the meaning of Rule 144A under the Securities Act. The information available about non-U.S. companies may be limited, and non-U.S. companies are generally not subject to the same uniform auditing and reporting standards as U.S. companies. Securities of some non-U.S. companies may not be as liquid as securities of comparable U.S. companies. Securities discussed herein may be rated below investment grade and should therefore only be considered for inclusion in accounts qualified for speculative investment.

Analysts employed by Yapi Kredi Yatirim, a non-U.S. broker-dealer, are not required to take the FINRA analyst licensing examination. The information contained in this report is intended solely for certain "major U.S. institutional investors" and may not be used or relied upon by any other person for any purpose. Such information is provided for informational purposes only and does not constitute a solicitation to buy or an offer to sell any securities under the Securities Act of 1933, as amended, or under any other U.S. federal or state securities laws, rules or regulations. The investment opportunities discussed in this report may be unsuitable for certain investors depending on their specific investment objectives, risk tolerance and financial position.

In jurisdictions where KCM is not registered or licensed to trade in securities, or other financial products, transactions may be executed only in accordance with applicable law and legislation, which may vary from jurisdiction to jurisdiction and which may require that a transaction be made in accordance with applicable exemptions from registration or licensing requirements.

The information in this publication is based on sources believed to be reliable, but KCM does not make any representation with respect to its completeness or accuracy. All opinions expressed herein reflect the author's judgment at the original time of publication, without regard to the date on which you may receive such information, and are subject to change without notice.

KCM or their affiliates may have issued other reports that are inconsistent with, and reach different conclusions from, the information presented in this report. These publications reflect the different assumptions, views and analytical methods of the analysts who prepared the report and Yapi Kredi Yatirim. Past performance should not be taken as an indication or guarantee of future performance, and no representation or warranty, express or implied, is provided in relation to future performance.

Other countries: Laws and regulations of other countries may also restrict the distribution of this report. Persons in possession of this document should inform themselves about possible legal restrictions and observe them accordingly.

The investment information, comments and advices given herein are not part of investment advisory activity. Investment advisory services are provided by authorized institutions to persons and entities privately by considering their risk and return preferences. Whereas the comments and advices included herein are of general nature. Therefore, they may not fit to your financial situation and risk and return preferences. For this reason, making an investment decision only by relying on the information given herein may not give rise to results that fit your expectations. This document is not addressed specifically to any particular individual or entity with similar financial situation, risk and return preferences. There aren't any promises or guarantees for providing a certain predetermined yield. All comments and advices are based on predictions, estimates and price targets. Changes in market conditions in time may cause changes in comments and advices in question. The extension and contents of investment instruments and transactions that are suitable to you are determined according to appropriateness test result. Appropriateness test is conducted to determine whether the customer has adequate knowledge and experience for understanding the risks of product or service, for the purposes of assessing whether the product or service marketed by the investment firm or requested by the customer is fit and proper for that customer. Any information, comment or advice herein, may not be compatible to your risk group and return preferences determined by the appropriateness test. For this reason, making an investment decision without determining your risk group and only by relying on the information given herein may not yield outcomes that fit to your

purpose, knowledge and experience. All information enclosed in this e-mail and document has been obtained from sources believed to be reliable and accurate but which without further investigation cannot be warranted as to their accuracy or completeness. For this reason, Yapı Kredi Yatırım Menkul Değerler A.Ş. cannot be held responsible for incompleteness and inaccuracy of such information. It is possible that individuals employed by Yapı Kredi Yatırım Menkul Değerler A.Ş. elsewhere or affiliates of Yapı Kredi Yatırım Menkul Değerler A.Ş. may disagree with the recommendations or opinions in this document. Unavoidable conflicts of interest that are based on reasonable causes, and relationships that can affect objectivity may be borne between Yapı Kredi Yatırım Menkul Değerler A.Ş. shareholders, employees and parties directly or indirectly related to shareholders and employees and clients, due to market functioning. From time to time, Yapı Kredi Yatırım Menkul Değerler A.Ş. and any of its directors, officers, employees or representatives, directly or indirectly, may have positions or otherwise be interested in any transactions, in any securities, or in any commodities mentioned. In case of such conflicts, Yapı Kredi Yatırım Menkul Değerler A.Ş. shall act upon the Conflicts of Interest Policy published on its website. This document is for the use of addressees only. It may not be copied or distributed to any other individual without the written consent of Yapı Kredi Yatırım Menkul Değerler A.Ş., or used for commercial purposes.
